



KYSTVERKET

---

# IHO IALA liaison report

## ARM6

---

Guttorm Tomren  
Ålesund, 24.04.2017

– Vi tar ansvar for sjøvegen

# IHO

---

- Positive attitude towards IALA
- Lots of politics (HO's)
- S-100WG
- ENCWG

– Vi tar ansvar for sjøvegen



KYSTVERKET

# S-100

---

- Basically, code is «based» on S-57
- Encryption is now a bottleneck (S-63)
- Still many loose ends
- Still no launch date
- New ECDIS will have both S-57 and S-101



# ENCWG

---

- Reluctant to do any changes
- Growing concern
  - S-57 will exist for 10-15 years more
- How to distribute multi-beam data?
  - Additional layer?
  - New scale ENC?

– Vi tar ansvar for sjøvegen



KYSTVERKET

# SHOM task group

---

- IALA is a member, plus many HO's
- Mariners feedback on poor ENC performance





# Overlapping text

If we consider a 1 : 50 000 scale paper chart, the CSCL of the ENC should normally be set to 45 000.



**Paper chart displayed at 1 : 50 000**

No overlap between objects nor between texts and objects.



**ENC displayed at 1 : 45 000 - No text displayed**  
Overlap between objects (LNDARE, UWTROC)



**ENC displayed at 1 : 45 000, with texts**

When displayed with the texts, the clutter becomes more obvious and makes the chart unreadable in some places.



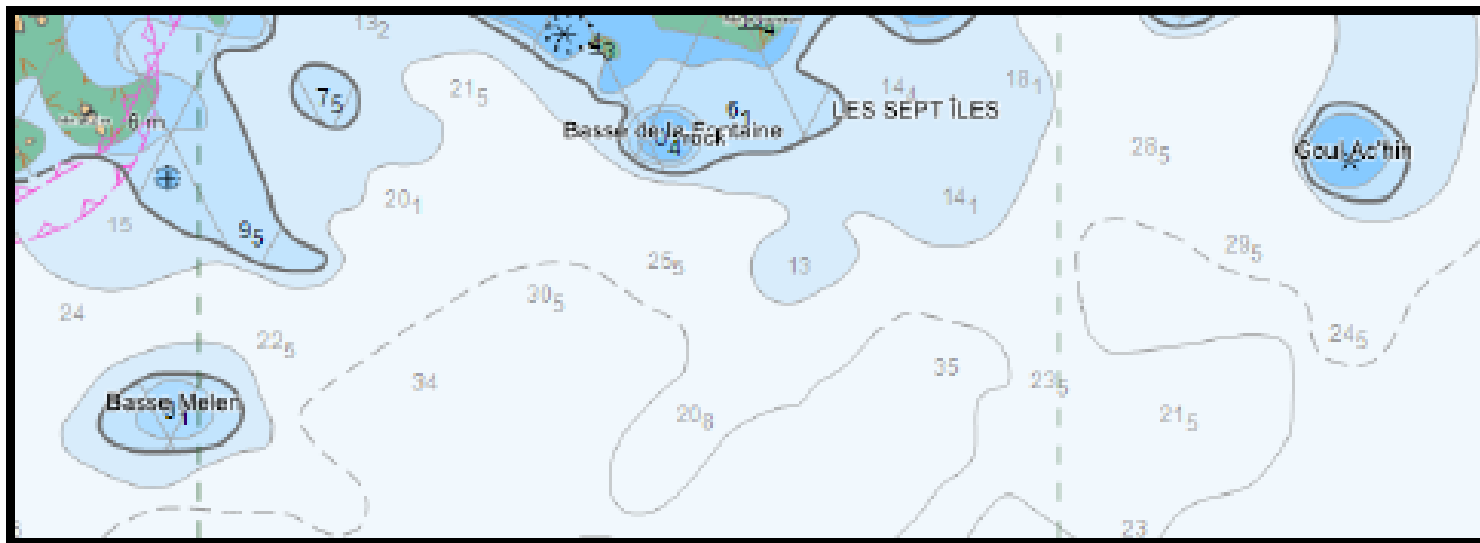
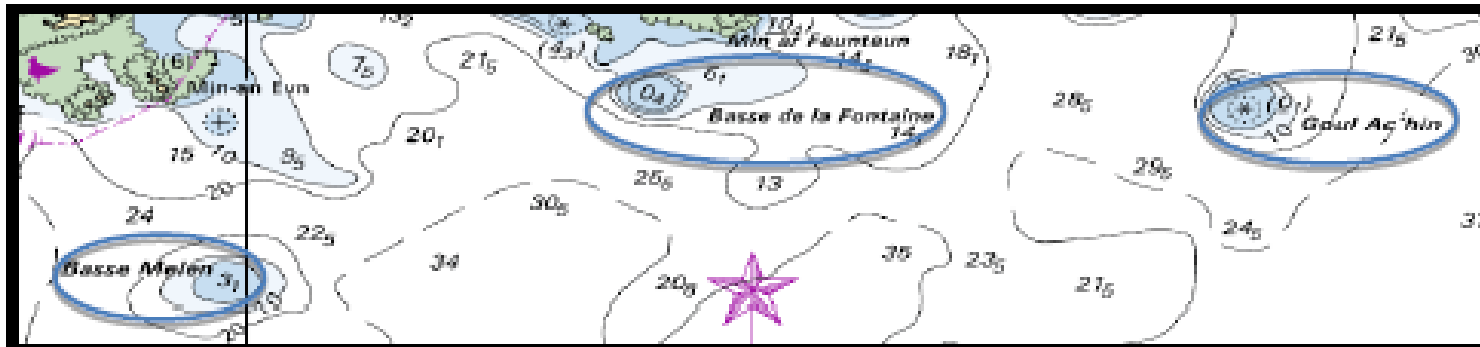
**ENC displayed at 1 : 90 000 - No text displayed**  
Note the over importance of Point LNDARE

– Vi tar ansvar for sjøvegen



KYSTVERKET

# On top of danger



– Vi tar ansvar for sjøvegen



KYSTVERKET

# Thanks

---

– Vi tar ansvar for sjøvegen



KYSTVERKET